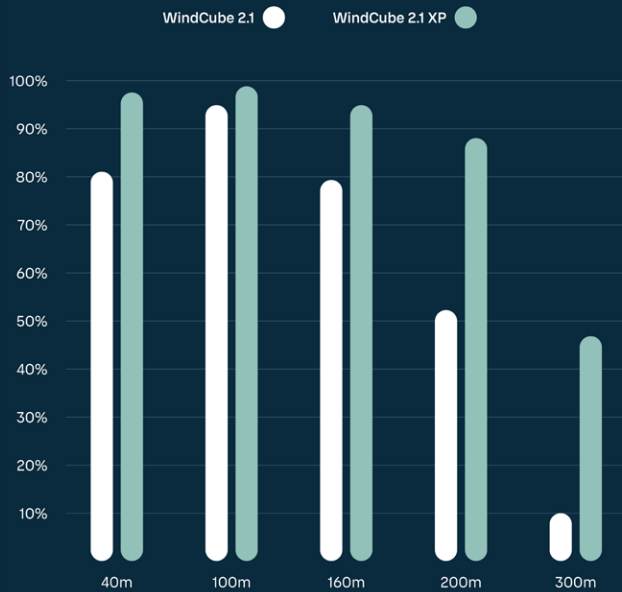


WindCube 2.1 XP

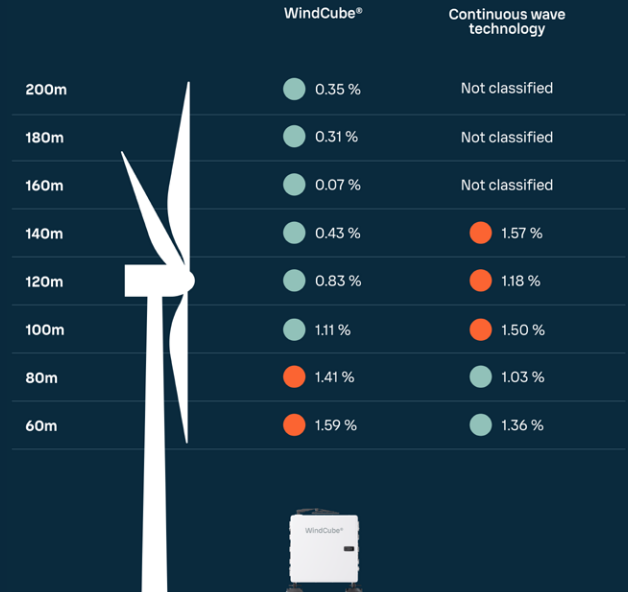
VAISALA

The new benchmark



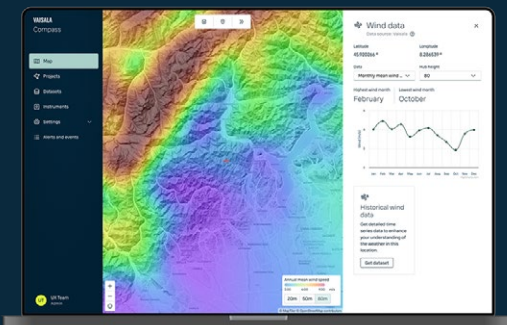
Enhanced data availability

69% average improvement in data availability at 200m in clean air conditions across multiple test locations.



IEC classification with outstanding results

WindCube is the only wind lidar that is IEC classified with extended range up to 200m yet still achieving industry's best measurement uncertainties (e.g. only 0.07% Horizontal Wind Speed at 160m).



Vaisala Compass

Vaisala Compass provides tools to manage your WindCube fleet, data sets and project. It also gives access to advanced post-processing algorithms.



-22% power consumption

Lower nominal power consumption of only 35W frees WindCube to operate with smaller powering solution than most other wind lidars.

Ref. B213016EN-A

© Vaisala 2025

vaisala.com



Sales, Support and Servicecenter D-A-CH-PL

Bonner Ring 9
50374 Erfstadt, Germany

+ 49 (0) 2235 95522 0

info@gwu-umwelttechnik.de

www.gwu-umwelttechnik.de

GWU-Umwelttechnik GmbH